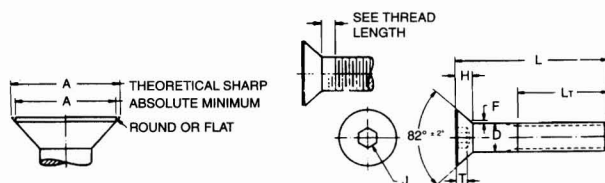
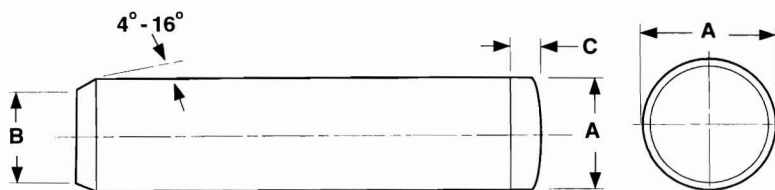


HEX SOCKET
FLAT HEAD SCREWS



Nominal Size or Basic Screw Diameter	D		A		H		J		T	F	L _T	
	Body Diameter		Head Diameter		Head Height		Hexagon Socket Size		Key Engagement	Fillet Extension Above D Max	Basic Thread Length	
			Theoretical Sharp Max	Abs. Min	Reference	Flushness Tolerance						
	Max	Min	Max	Min	Max	Min	Nominal	Max	Max	Min		
4	0.1120	0.1120	0.1075	0.255	0.218	0.083	0.011	1/16	0.062	0.055	0.012	0.750
5	0.1250	0.1250	0.1202	0.281	0.240	0.090	0.012	5/64	0.078	0.061	0.014	0.750
6	0.1380	0.1380	0.1329	0.307	0.263	0.097	0.013	5/64	0.078	0.066	0.015	0.750
8	0.1640	0.1640	0.1585	0.359	0.311	0.112	0.014	3/32	0.094	0.076	0.015	0.875
10	0.1900	0.1900	0.1840	0.411	0.359	0.127	0.015	1/8	0.125	0.087	0.015	0.875
1/4	0.2500	0.2500	0.2435	0.531	0.480	0.161	0.016	5/32	0.156	0.111	0.015	1.000
5/16	0.3125	0.3125	0.3053	0.656	0.600	0.198	0.017	3/16	0.188	0.135	0.015	1.125
3/8	0.3750	0.3750	0.3678	0.781	0.720	0.234	0.018	7/32	0.219	0.159	0.015	1.250
7/16	0.4375	0.4375	0.4294	0.844	0.781	0.234	0.018	1/4	0.250	0.159	0.015	1.375
1/2	0.5000	0.5000	0.4919	0.938	0.872	0.251	0.018	5/16	0.312	0.172	0.015	1.500
5/8	0.6250	0.6250	0.6163	1.188	1.112	0.324	0.022	3/8	0.375	0.220	0.015	1.750
3/4	0.7500	0.7500	0.7406	1.438	1.355	0.396	0.024	1/2	0.500	0.220	0.015	2.000

DOWEL PINS



Nominal Size	A				B	C	Shear Strength
	Standard Pin (0.002 over basic size)		Standard Pin (0.001 over basic size)		Point Diameter Max	Top Radius	Double Shear (Lbs.)
	Max	Min	Max	Min			
1/8	0.1253	0.1251	0.1261	0.1259	0.119	3/64	3,600
3/16	0.1878	0.1876	0.1886	0.1884	0.176	3/64	8,000
1/4	0.2503	0.2501	0.2511	0.2509	0.239	1/16	14,400
5/16	0.3128	0.3126	0.3136	0.3134	0.301	1/16	22,400
3/8	0.3753	0.3751	0.3761	0.3759	0.364	5/64	32,400
7/16	0.4378	0.4376	0.4386	0.4384	0.4205	3/32	44,000
1/2	0.5003	0.5001	0.5011	0.5009	0.483	7/64	57,400
5/8	0.6253	0.6251	0.6261	0.6259	0.608	1/8	89,800
3/4	0.7503	0.7501	0.7511	0.7509	0.728	1/8	129,200
7/8	0.8753	0.8751	0.8761	0.8759	0.853	1/8	176,000
1	1.0003	1.0001	1.0001	1.0009	0.978	1/8	230,000